

# CRK-9000 Auto Ref/Keratometer



To measure a human eye with high precision,  
Wavefront Technology could be the answer.

# CRK-9000 Auto Ref/Keratometer



Wavefront technology measures the wavefront of light reflected from the retina and the refractive power with various sensors divided by sectors and analyses them with extreme precision.

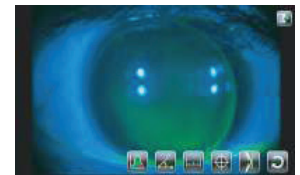
## 3D Auto Tracking

The cutting edged auto sensor and 3 dimensional movement mechanism enables you to track down a measuring focus of an eye automatically and complete the measurement perfectly, even with an inexperienced user.



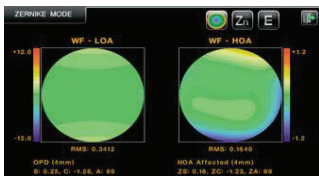
## Colour View Mode

The Full Colour CCD camera and white LED light source in the Auto Ref-Keratometer enables you to see eyes and contact lens fitting status, which was only previously possible with slit lamps.



## High Order Aberration Map

Besides the conventional data such as Spherical, Cylinder and Axis, the high order aberration data is displayed in a graphical Zernike refraction map for better understanding of patient's eyes and superior clinical decision making.



ZERNIKE MODES	
1. Tilt	0.007, 0.3%
2. Tilt	0.003, 0.2%
3. Astigm.	0.003, 0.2%
4. Defocus	0.003, 0%
5. Astigm.	-0.328, 26%
6. Trefoil	0.037, 3%
7. Coma	-0.128, 10%
8. Coma	-0.208, 16%
9. Trefoil	-0.033, 3%
10. Quadrafoil	-0.003, 0.2%
11. 2nd Astigm.	-0.004, 0.3%
12. Spherical	-0.002, 0.2%
13. 3rd Astigm.	-0.004, 0.3%
14. Quadrafoil	-0.003, 0.2%

## Motorised Chin Rest & Auto Cutting Printer

Motorised chin rest allows to set the height of the measuring point comfortably and quickly. Automatic paper cutting and one touch paper change functions are new advantages of the CRK-9000.



## Technical Specifications

Measurement Mode	K/R Mode	Continuous Keratometry & Refractometry
	REF Mode	Refractometry
	KER Mode	Keratometry
	CLBC Mode	Contact Lens Base Curve Measurement
	KER P Mode	Peripheral Keratometry
Colour View Mode	Colour View & Contact Lens Fitting Assistance (White & Blue LED)	
Refractometry	Vertex Distance (VD)	0.0, 12.0, 13.5, 15.0mm
	Sphere (SPH)	-30.00D ~ ±25.00D (VD=12mm) (Increments: 0.01/0.12/0.25D)
	Cylinder (CYL)	-12.00D ~ 0.00D (or 0.00D ~ ±12.00D)
	Axis (Ax)	0° ~ 180° (Increments: 1°)
	Cylinder Form	- , + , ±
	Pupil Distance	10 ~ 85mm
	Min. Pupil Diameter	2.0mm

Keratometry	Radius of Curvature	5.0 ~ 13.0mm (Increments: 0.01mm)
	Corneal Power	+25.96D ~ +67.50D (n=1.3375) (Increments: 0.01/0.12/0.25D)
	Corneal Astigmatism	-15.00D ~ 0.00D (Increments: 0.01/0.12/0.25D)
	Axis	0° ~ 180° (Increments: 1°)
	Pupil/Iris Diameter	2.0 ~ 14.0mm (Increments: 0.01mm)
Other	Display	Tiltable 7" TFT Touch LCD Screen
	Internal Printer	Thermal Line Printer with Auto Cutting Function
	Power Supply	AC100-240V, 50/60Hz, 60W
	Size	252mm (W) x 500mm (D) x 423mm (H)
	Weight	20kg